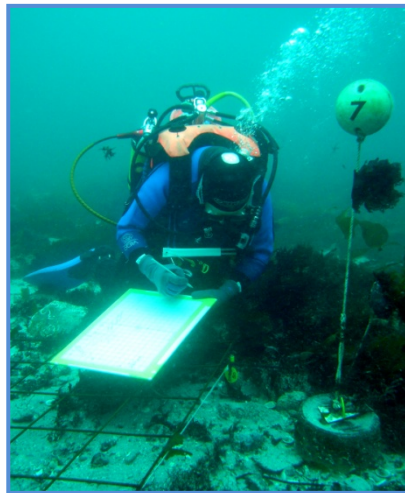


HMS COLOSSUS



SURVEY REPORT 2010

KEVIN CAMIDGE

| | |
|-------------|--------------|
| Site Name | HMS Colossus |
| Licence | Survey |
| Designation | 2001/2403 |

Summary

Monitoring the condition of the wreck continued this year with two separate inspections undertaken. The sediment level monitoring which began in 2003 was continued. The sediment levels on site have fallen again this year. Previously buried parts of the wreck continue to expose due to the diminution of the sediment levels. Parts of the wreck are beginning to disintegrate due to attack from marine wood boring organisms.

In July this year a team of CISMAS divers undertook a survey of the artefacts exposed on the seabed; a small area of recently exposed timber at the western end of the wreck was also surveyed. This work was commissioned by English Heritage.

Kevin Camidge
31.X.2010

Fieldwork Activities

The following activities were undertaken on the site this year:

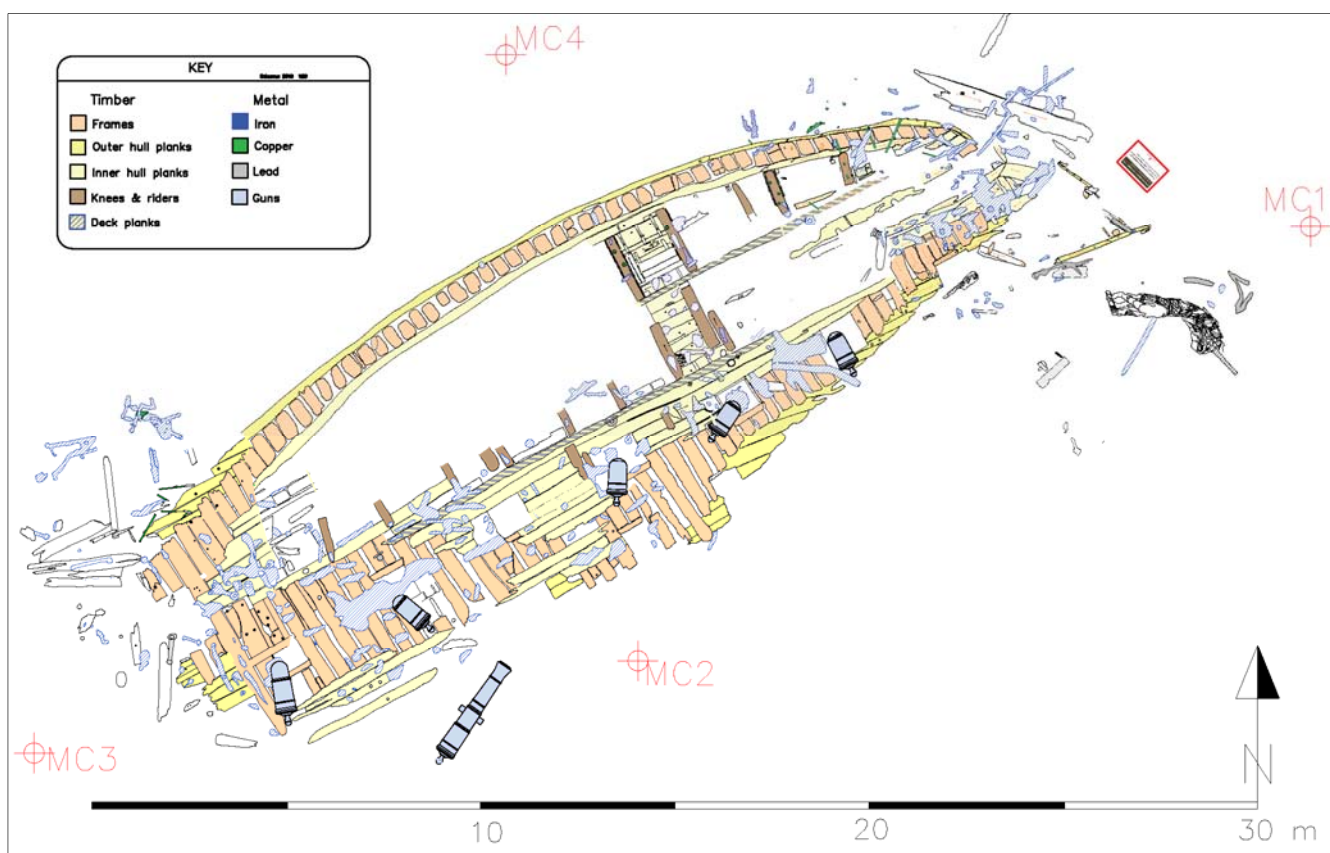
- Monitoring of the deterioration of the exposed timber on the seabed.
- Recording of the sediment levels.
- Monitoring survey of the exposed artefacts.
- Survey of recently exposed timber at the western end of the wreck.

Diving was undertaken on the following occasions

| Date | Task | Number of dives | Diver hours |
|-----------------|---------------------|-----------------|-------------|
| 24-29 July 2010 | Artefact monitoring | 84 | 94 |
| 31 Aug 2010 | Site inspection | 2 | 2.5 |
| TOTAL | | 86 | 96.5 |

Monitoring Survey of Exposed Artefacts

This project was undertaken by CISMAS and was commissioned by English Heritage. A team of seven CISMAS divers undertook this work 24-29th July 2010. The project report has the results of this survey as well as the survey of the newly exposed timber at the western end of the wreck; the project report is attached.

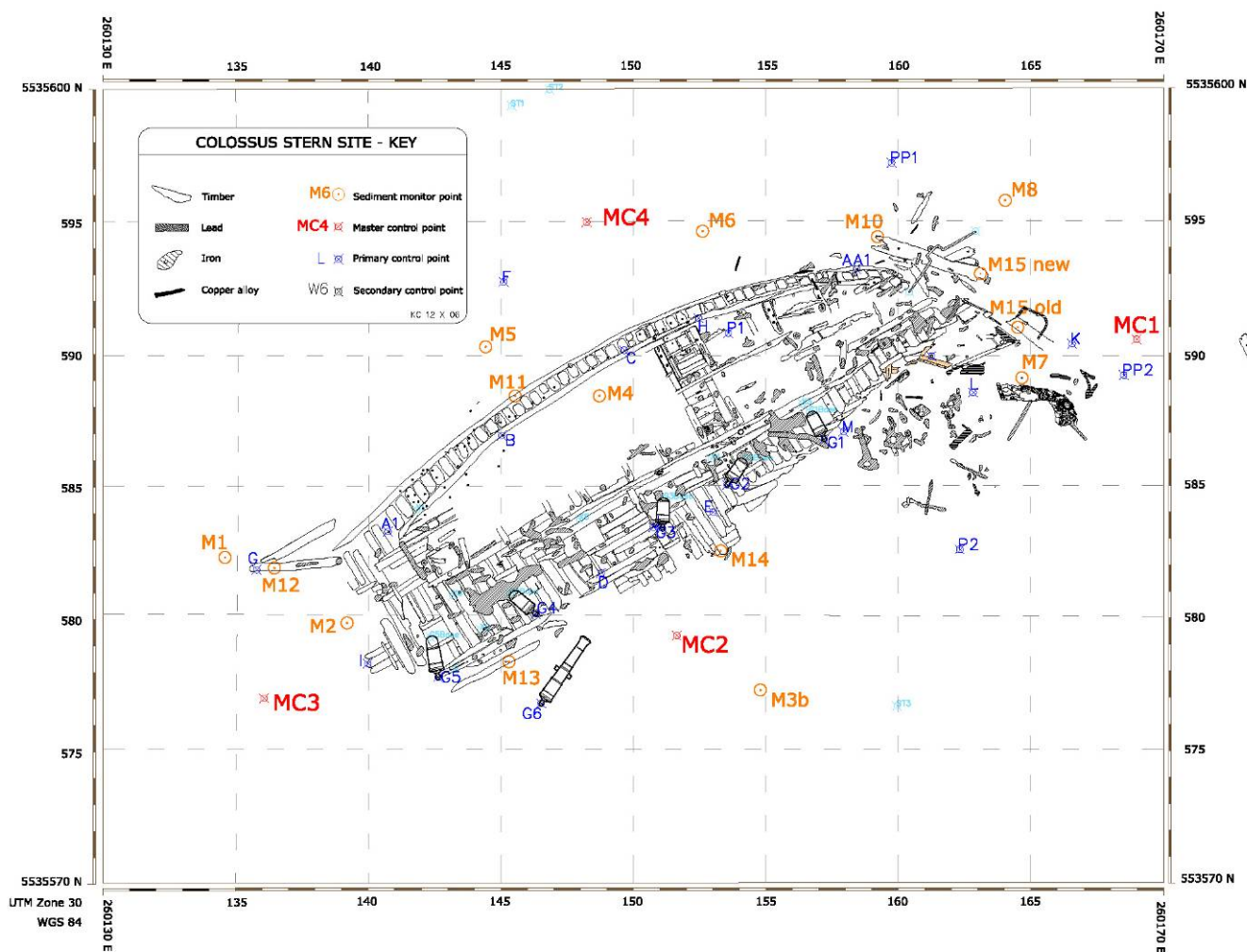


2010 Site Plan

Sediment level monitoring

The sediment level monitoring began in 2003 as part of the *Colossus* site stabilisation trials commissioned by English Heritage (project # 3593). A copy of the full stabilisation report can be downloaded at www.cismas.org.uk.

Sediment level measurements were taken in May, August and September this year.



The sediment level measurements shown in blue were taken this year.

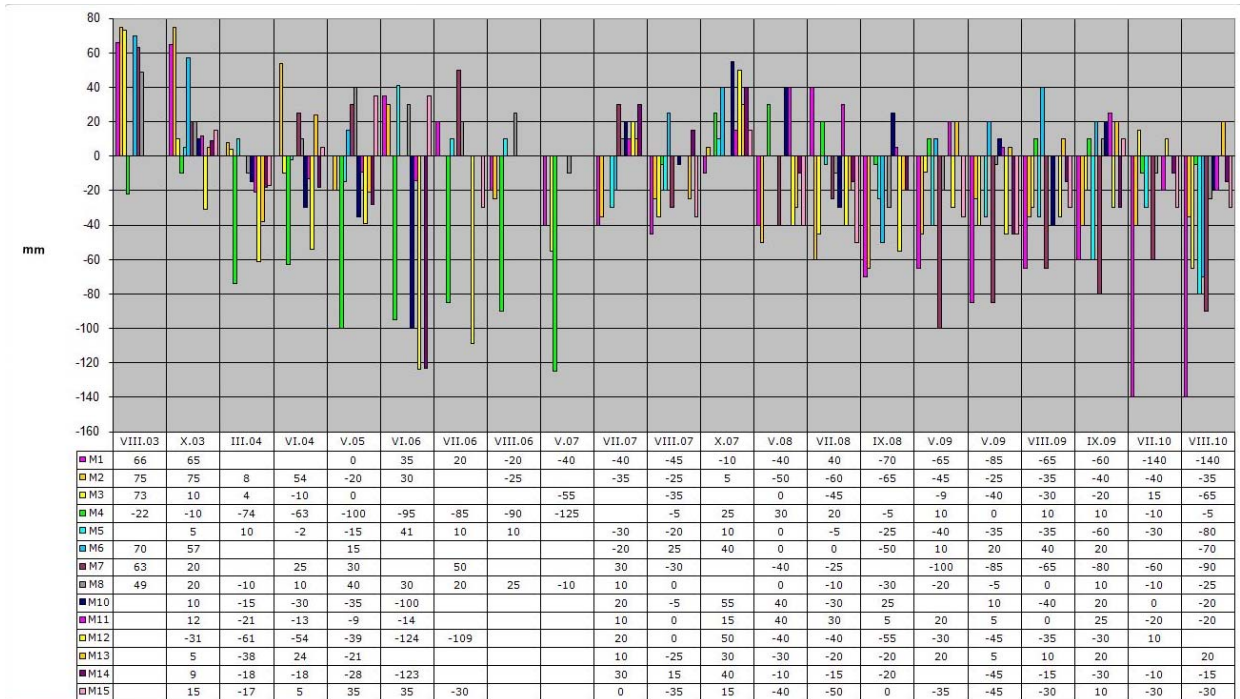
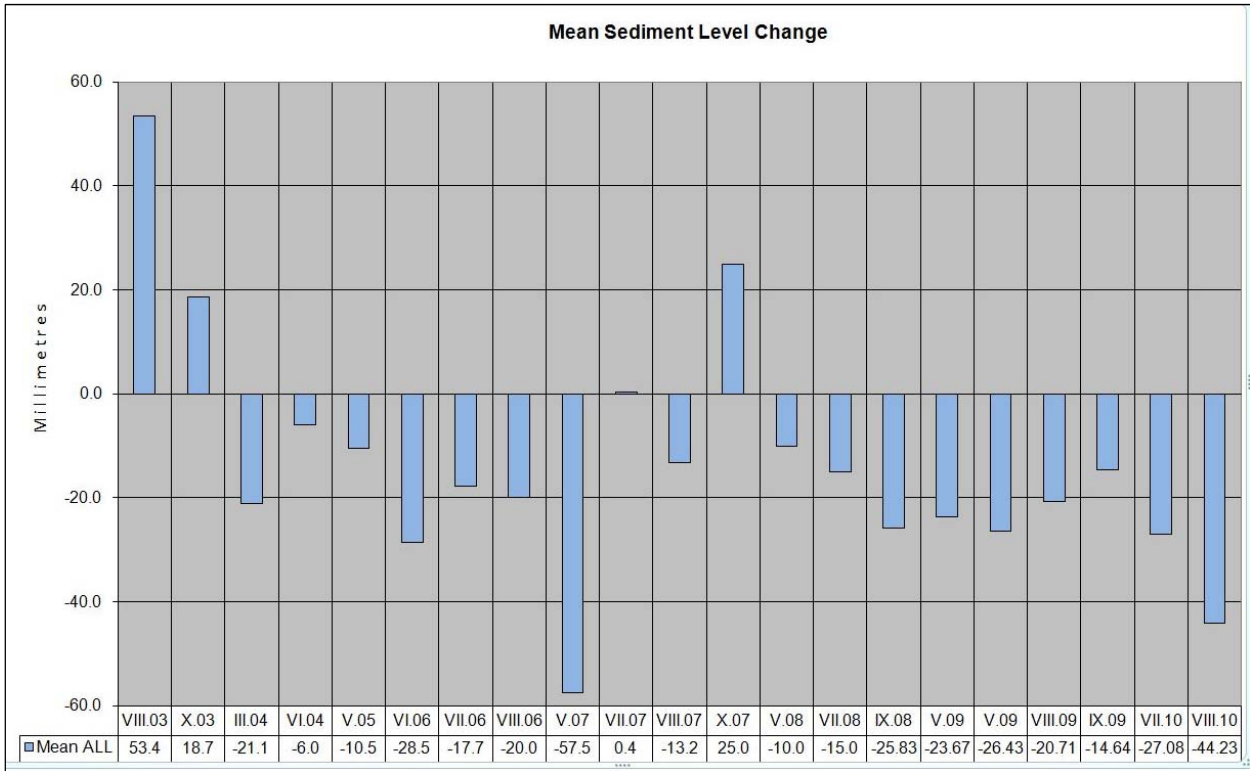


Chart of sediment level changes relative to May 2003 for M1 to M8; August 2003 for M10 to M15. Values shown are in millimetres; positive values denote a rise in seabed level (relative to 2003) while negative values denote a fall in seabed levels (relative to 2003).

A blank entry in the table indicates that the diver was unable to locate the monitor point or that the point was missing. Often the points are very difficult to find due to the large amount of weed which covers the site over much of the summer period. It is clear that the sediment levels on the site have continued to fall this year. The variation in sediment levels this year is one of the largest recorded.



Bar chart showing the mean overall change in seabed sediment level (relative to the level in 2003) for all monitor points. All values are in millimetres. Zero represents the seabed level in 2003; negative values denote a mean fall in sediment levels, while positive values a mean rise in sediment levels